

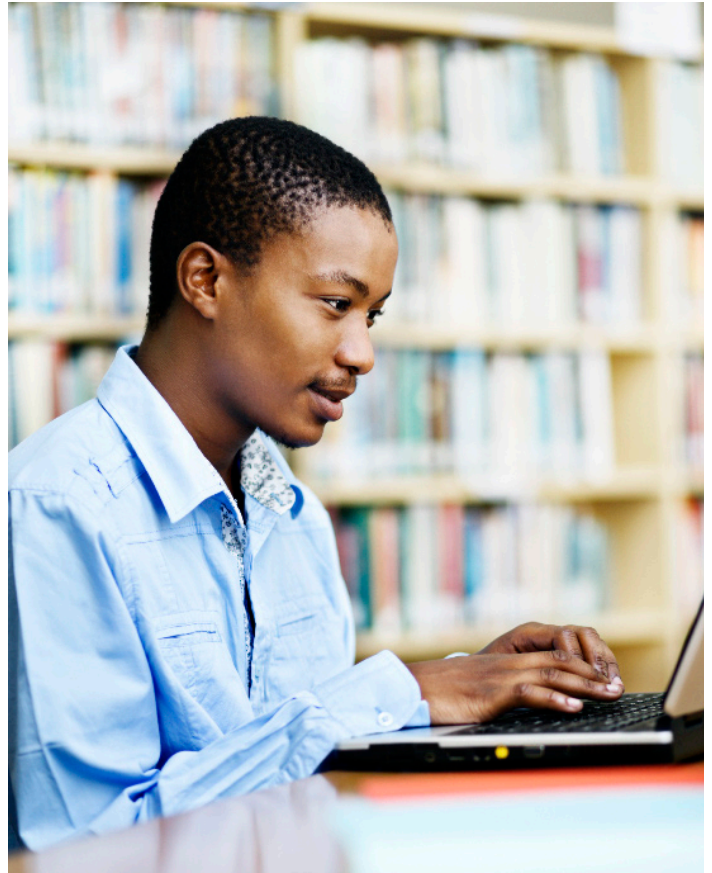
# Hudson County Day Reporting Center

## CSI's DRC Supports Offender Reintegration

Community Solutions' (CSI) Day Reporting Center (DRC) Program provides a community-based alternative to incarceration for former inmates. The program also provides cognitive behavioral interventions as a service to some former inmates at high risk for recidivism. CSI uses a curricula-driven, evidence-based model designed to assess the needs of each client to reduce individual risk factors. Participants work closely with case managers to develop individual goals and make positive changes in their lives.

### Services Include:

- Case Management Services
- Cognitive Behavioral Therapy
- Random Drug and Alcohol Monitoring
- Substance Abuse Education
- Referrals for Specialized Services
- Monitoring Attendance at Required Activities
- Life Skills Development
- Stress and Anger Reduction
- Money Management
- Family and Parenting Skills Education



***"Today I am living with my wife and daughter again and we are saving to buy a house. I am a contributing member of society and I feel that I am no longer a burden to the community. I have had many people at Community Solutions help me in many different ways and I cannot thank them enough for all their support and guidance."***

*- Omar, New Jersey CSI client*



community  
solutions, inc.  
our name is our mission

# Community Solutions, Inc. Hudson County Day Reporting Center

## Hudson County DRC

2853 J.F.K. Boulevard  
Jersey City, NJ 07306  
(201) 521-1300

## Vice President of Development, Adult Services

Diane Harrington  
E-mail: dharrington@csimail.org  
(860) 683-7100

## Vice President of Adult Services

Sherry Albert  
E-mail: salbert@csimail.org  
(860) 683-7100

## Alternative programs cut crime, cut costs and build communities.

### Cut Crime

Research on state recidivism rates has shown that placing appropriate offenders in community programs under supervision reduces the potential for revocation and return to incarceration. By supporting this return to law abiding behavior, recidivism is reduced and public safety is enhanced.

### Cut Costs

Effective reentry policies save money and make better use of limited resources by establishing a more coordinated and comprehensive continuum of care and supervision. Even small reductions in recidivism rates will generate substantial cost-savings by avoiding more costly incarceration. DRC programs operate at a fraction of the cost of a prison bed.

### Build Communities

CSI is committed to strengthening the connection between community and individuals. DRC programs allow clients to reenter the workforce, to be parents, and to play a role in strengthening their families and neighborhoods.



***“NJ is one of only a handful of states to reduce both our prison population and recidivism rates by more than ten percent. It is through quality programs such as CSI that we are able to achieve these results.”***

*- Leonard Ward  
Director, New Jersey State Parole Board*

## Cognitive behavioral and motivational interviewing techniques are used throughout CSI programs.

### About CSI

CSI is a nonprofit organization that promotes self-reliance, responsibility and accountability for at-risk and disadvantaged youth and adults. Since 1962, CSI has delivered supervision, treatment, and comprehensive, individual services to help our clients interact more effectively in their communities and become productive citizens.

### Our Mission

To promote the independence, citizenry and well-being of individuals and families involved, or at risk of involvement, in the child welfare, juvenile justice and criminal justice systems.